

# UNO SUITE TYPE A

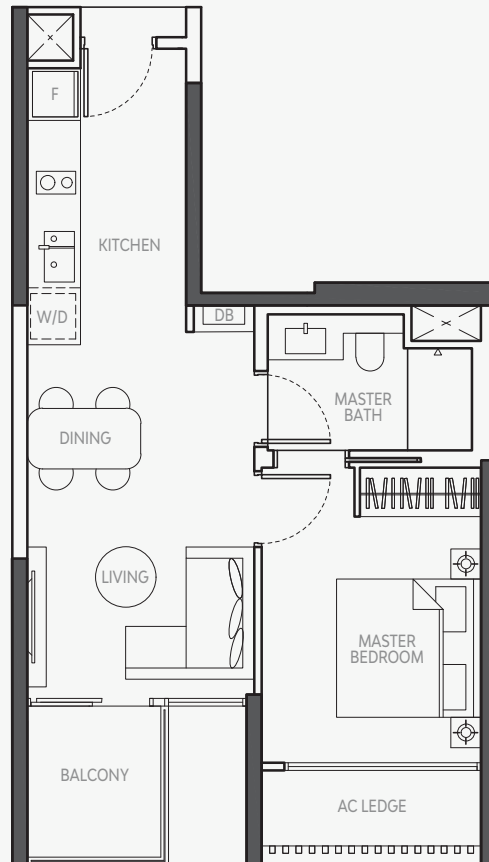
51 SQM / 549 SQFT

#07-03 - #17-03

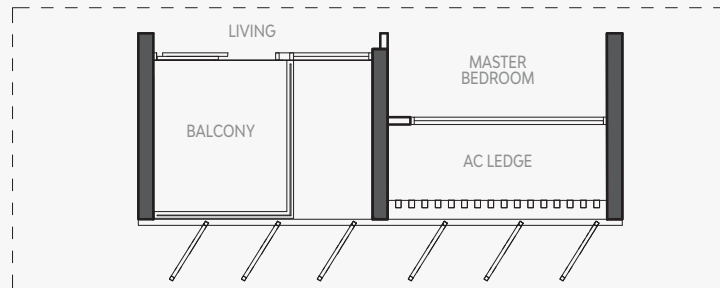
#19-03 - #22-03

#07-06 - #17-06

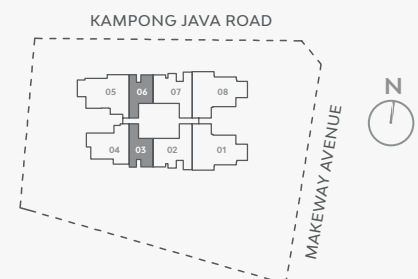
#19-06 - #22-06



APPLICABLE TO #19-03 - #22-03



SECURITY SCREENING EXTENT WHERE  
REQUIRED BY RELEVANT AUTHORITIES



  UNDER-COUNTER WASHER CUM DRYER  
 F INTEGRATED FRIDGE  
 DB DISTRIBUTION BOX  
 X VOID SPACE

Area includes A/C ledge and balcony where applicable. The above plans and illustrations are subject to change as maybe required or approved by the relevant authorities. All floor areas are approximate only and subject to final survey. Please refer to key plan for orientation. The balcony shall not be enclosed unless with the approved balcony screen. For an illustration of the approved balcony screen, please refer to "Balcony Screen" page on this brochure.

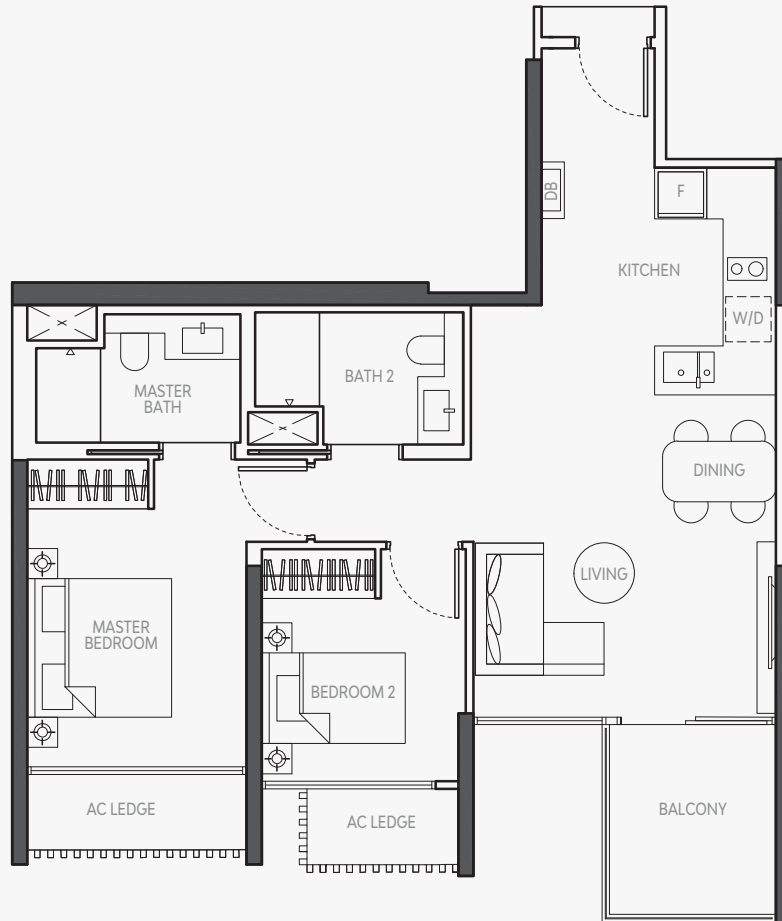
# DUO SUITE TYPE B1

81 SQM / 872 SQFT

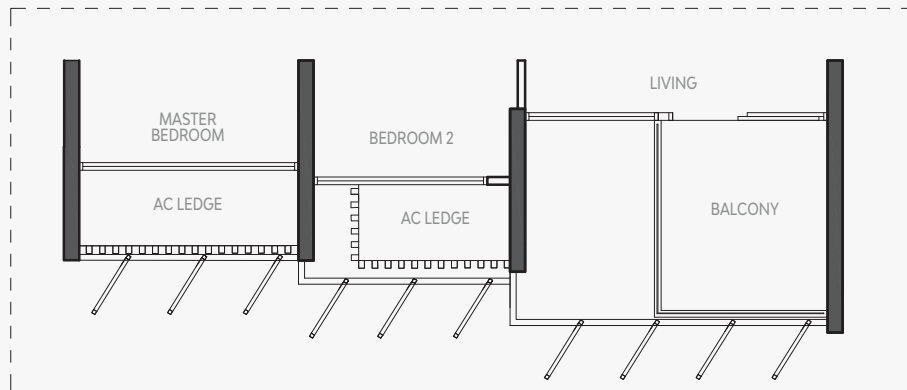
#07-02 - #17-02

#19-02 - #22-02

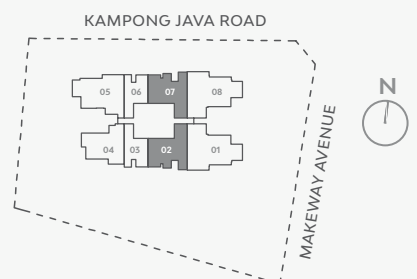
#07-07 - #17-07



APPLICABLE TO #19-02 - #22-02



SECURITY SCREENING EXTENT WHERE REQUIRED BY RELEVANT AUTHORITIES



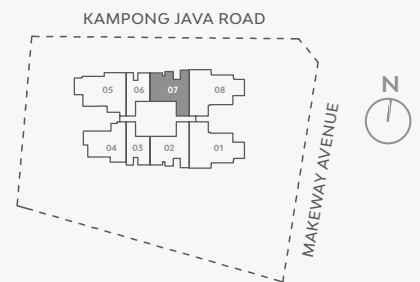
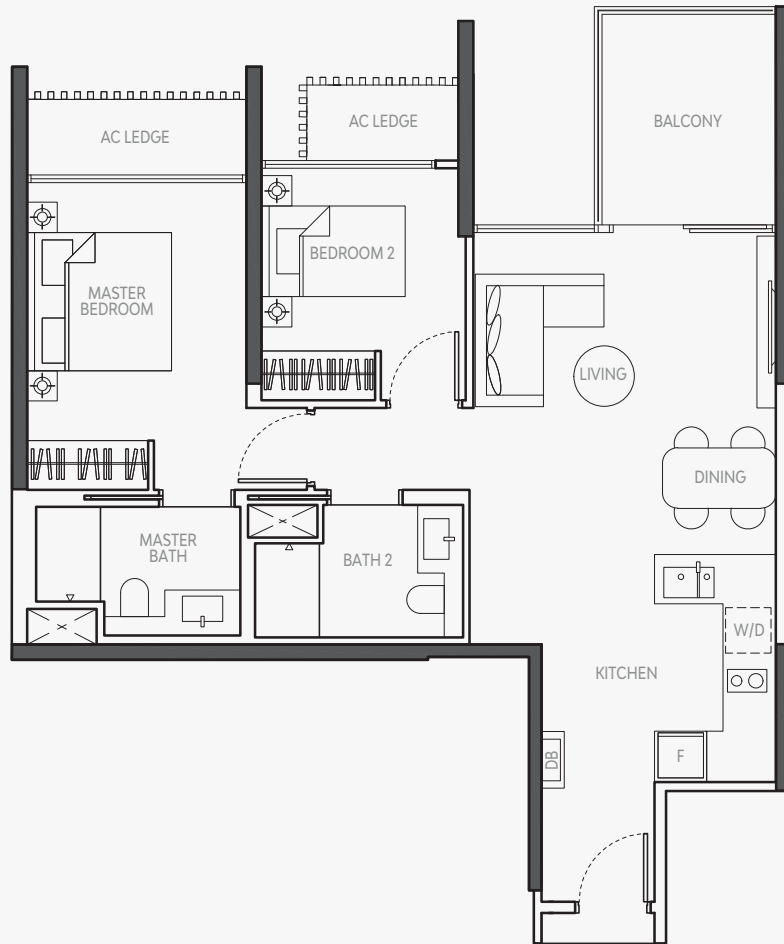
W/D UNDER-COUNTER WASHER CUM DRYER F INTEGRATED FRIDGE DB DISTRIBUTION BOX ☒ VOID SPACE

Area includes A/C ledge and balcony where applicable. The above plans and illustrations are subject to change as maybe required or approved by the relevant authorities. All floor areas are approximate only and subject to final survey. Please refer to key plan for orientation. The balcony shall not be enclosed unless with the approved balcony screen. For an illustration of the approved balcony screen, please refer to "Balcony Screen" page on this brochure.

# DUO SUITE TYPE B2

82 SQM / 883 SQFT

#19-07 - #22-07



  UNDER-COUNTER WASHER CUM DRYER  
 F INTEGRATED FRIDGE  
 DB DISTRIBUTION BOX  
   VOID SPACE

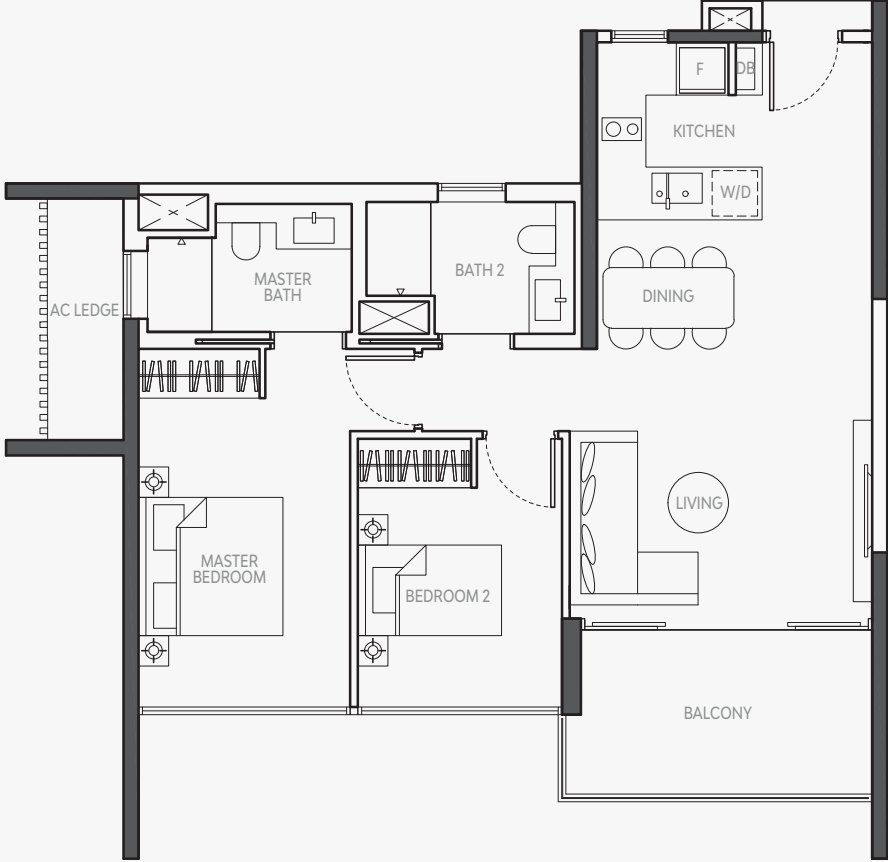
Area includes A/C ledge and balcony where applicable. The above plans and illustrations are subject to change as maybe required or approved by the relevant authorities. All floor areas are approximate only and subject to final survey. Please refer to key plan for orientation. The balcony shall not be enclosed unless with the approved balcony screen. For an illustration of the approved balcony screen, please refer to "Balcony Screen" page on this brochure.

# DUO SUITE TYPE B3

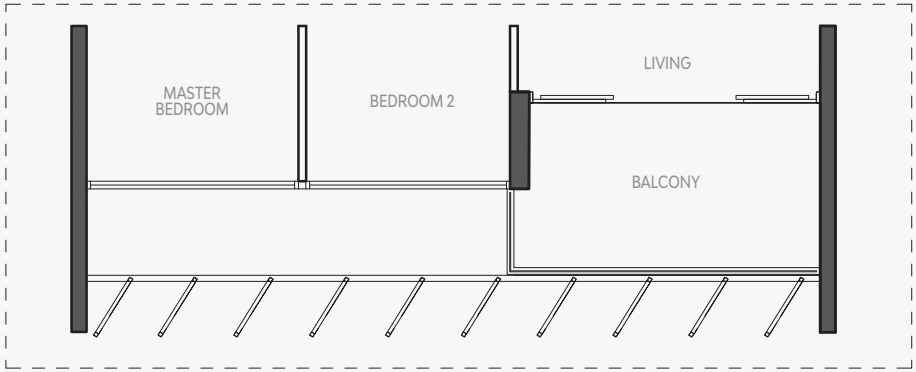
85 SQM / 915 SQFT

#07-04 - #17-04

#19-04 - #22-04

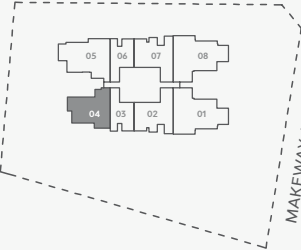


APPLICABLE TO #19-04 - #22-04



SECURITY SCREENING EXTENT WHERE REQUIRED BY RELEVANT AUTHORITIES

KAMPONG JAVA ROAD



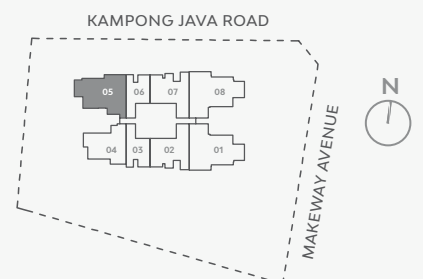
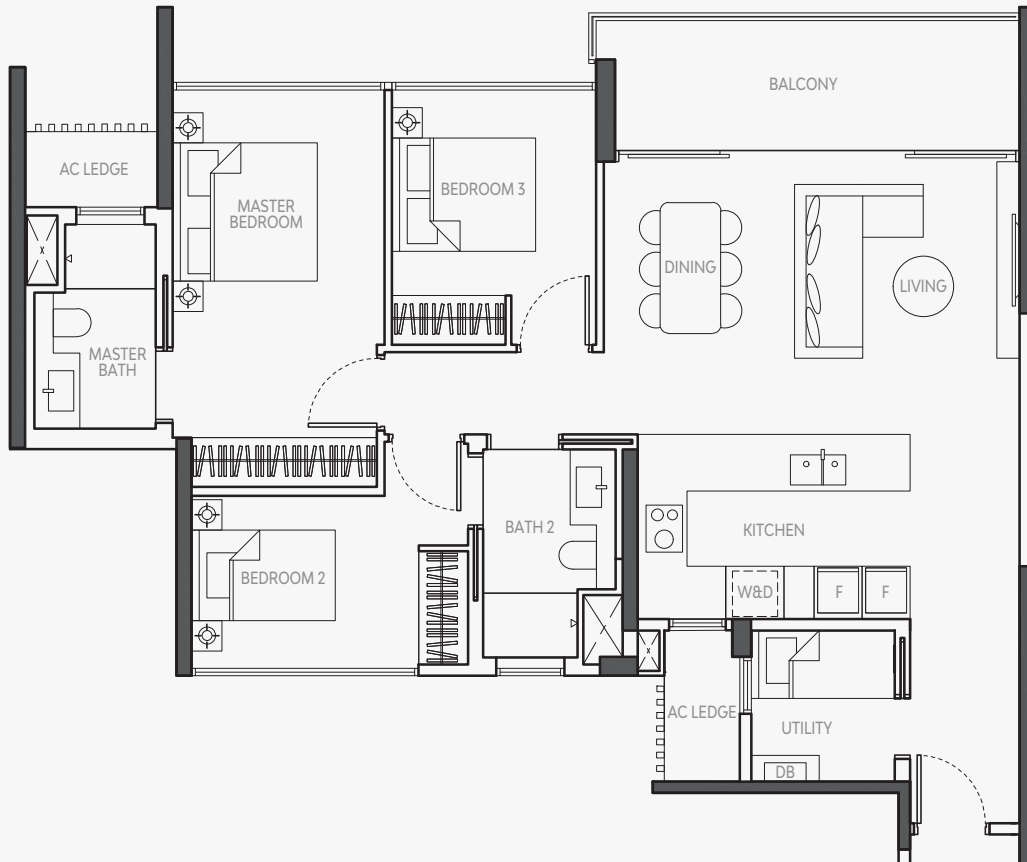
W/D UNDER-COUNTER WASHER CUM DRYER F INTEGRATED FRIDGE DB DISTRIBUTION BOX X VOID SPACE

Area includes A/C ledge and balcony where applicable. The above plans and illustrations are subject to change as maybe required or approved by the relevant authorities. All floor areas are approximate only and subject to final survey. Please refer to key plan for orientation. The balcony shall not be enclosed unless with the approved balcony screen. For an illustration of the approved balcony screen, please refer to "Balcony Screen" page on this brochure.

# TRES SUITE TYPE C1

109 SQM / 1173 SQFT

#07-05 - #17-05



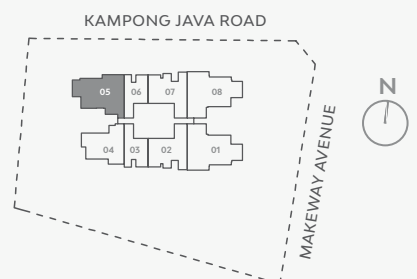
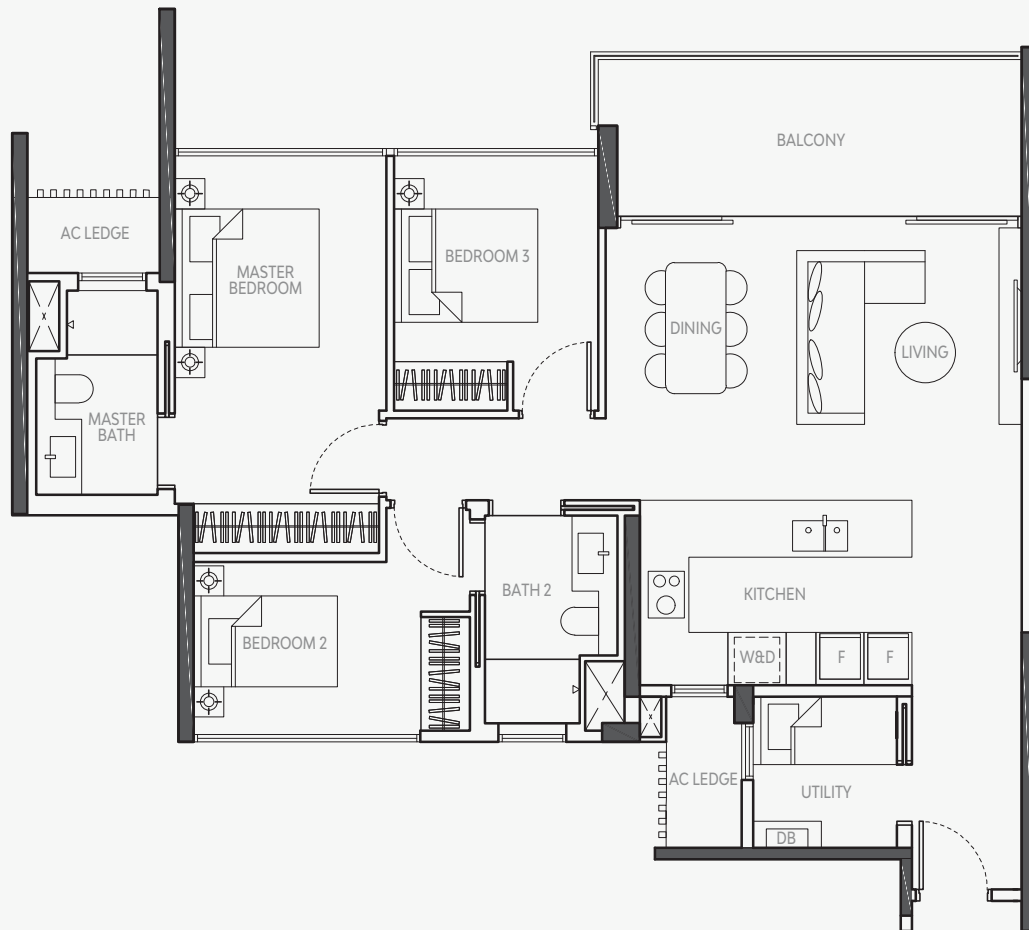
W&D: WASHER AND DRYER    F: INTEGRATED FRIDGE    DB: DISTRIBUTION BOX    ☒: VOID SPACE

Area includes A/C ledge and balcony where applicable. The above plans and illustrations are subject to change as maybe required or approved by the relevant authorities.  
 All floor areas are approximate only and subject to final survey. Please refer to key plan for orientation. The balcony shall not be enclosed unless with the approved balcony screen.  
 For an illustration of the approved balcony screen, please refer to "Balcony Screen" page on this brochure.

# TRES SUITE TYPE C2

110 SQM / 1184 SQFT

#19-05 - #22-05



W&D WASHER AND DRYER  
 F INTEGRATED FRIDGE  
 DB DISTRIBUTION BOX  
 X VOID SPACE

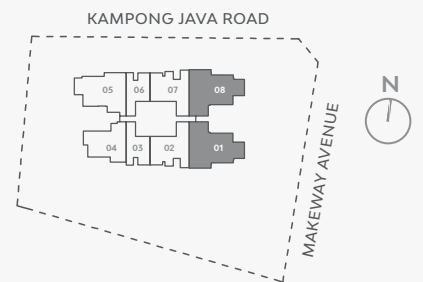
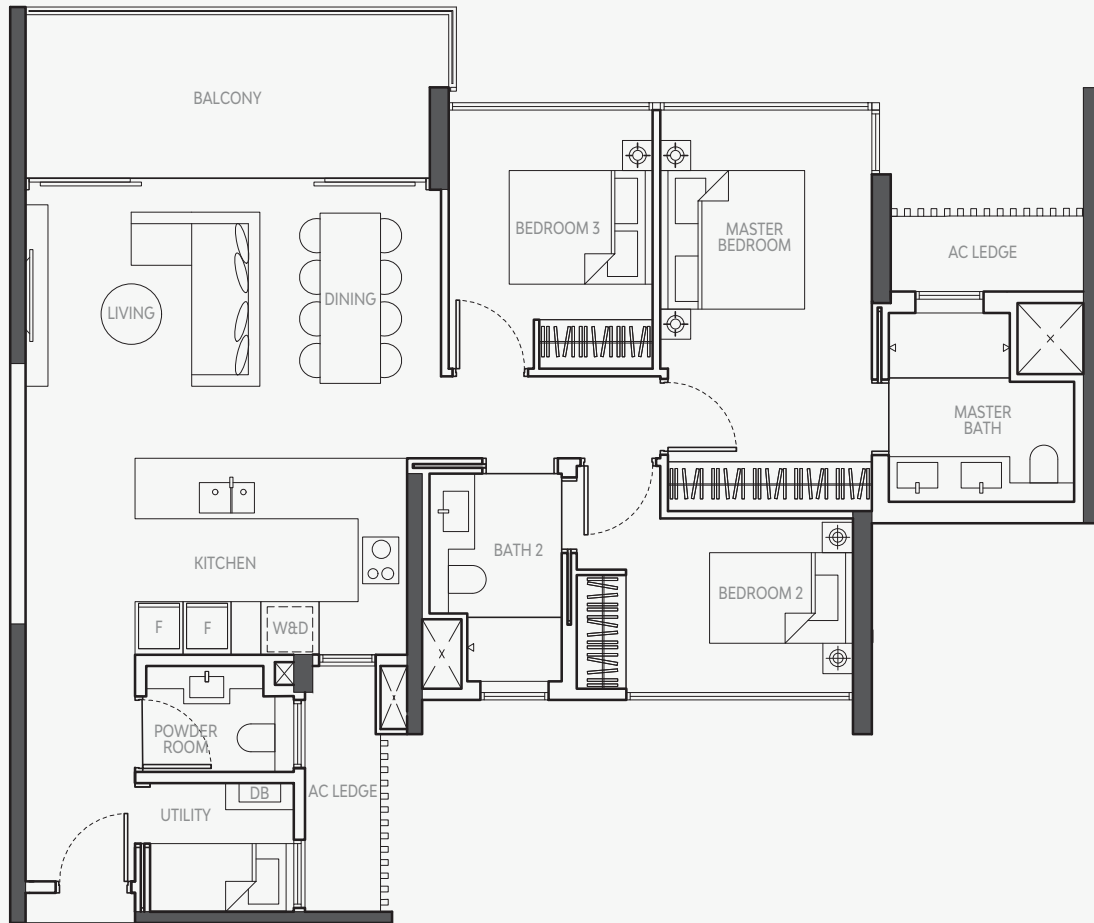
Area includes A/C ledge and balcony where applicable. The above plans and illustrations are subject to change as maybe required or approved by the relevant authorities. All floor areas are approximate only and subject to final survey. Please refer to key plan for orientation. The balcony shall not be enclosed unless with the approved balcony screen. For an illustration of the approved balcony screen, please refer to "Balcony Screen" page on this brochure.

# TRES DELUXE TYPE C3

119 SQM / 1281 SQFT

#07-01 - #17-01

#07-08 - #17-08



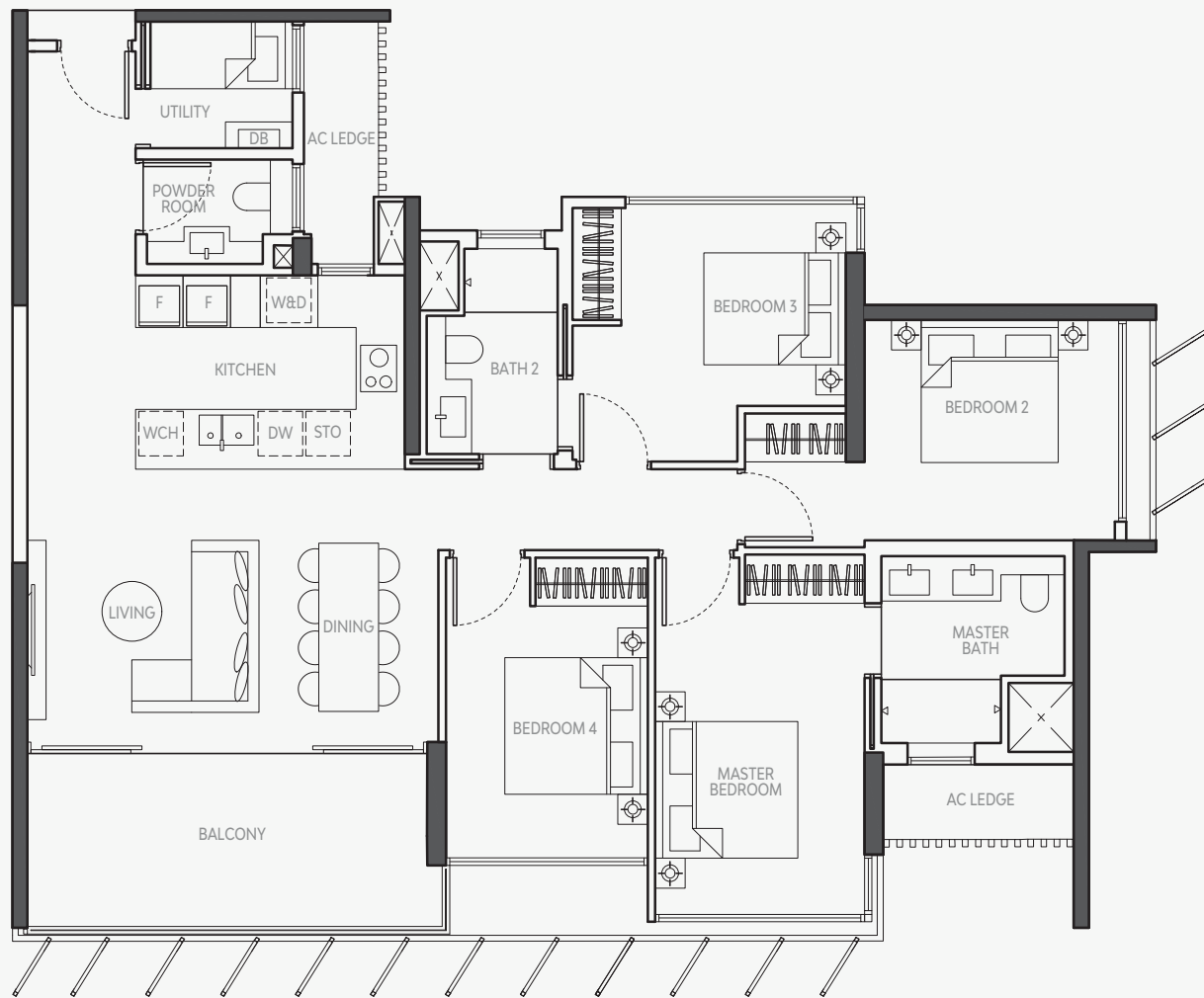
W&D: WASHER AND DRYER    F: INTEGRATED FRIDGE    DB: DISTRIBUTION BOX    X: VOID SPACE

Area includes A/C ledge and balcony where applicable. The above plans and illustrations are subject to change as maybe required or approved by the relevant authorities.  
 All floor areas are approximate only and subject to final survey. Please refer to key plan for orientation. The balcony shall not be enclosed unless with the approved balcony screen.  
 For an illustration of the approved balcony screen, please refer to "Balcony Screen" page on this brochure.

# QUAD SUITE TYPE D1

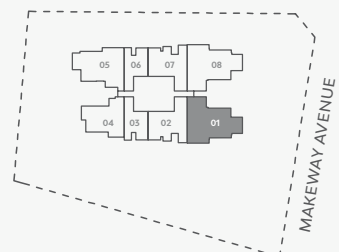
139 SQM / 1496 SQFT

#19-01 - #22-01



SECURITY SCREENING EXTENT WHERE  
REQUIRED BY RELEVANT AUTHORITIES

KAMPONG JAVA ROAD



- W&D: WASHER AND DRYER    DW: DISHWASHER    F: INTEGRATED FRIDGE    DB: DISTRIBUTION BOX
- WCH: WINE CHILLER    STO: STEAM OVEN    X: VOID SPACE

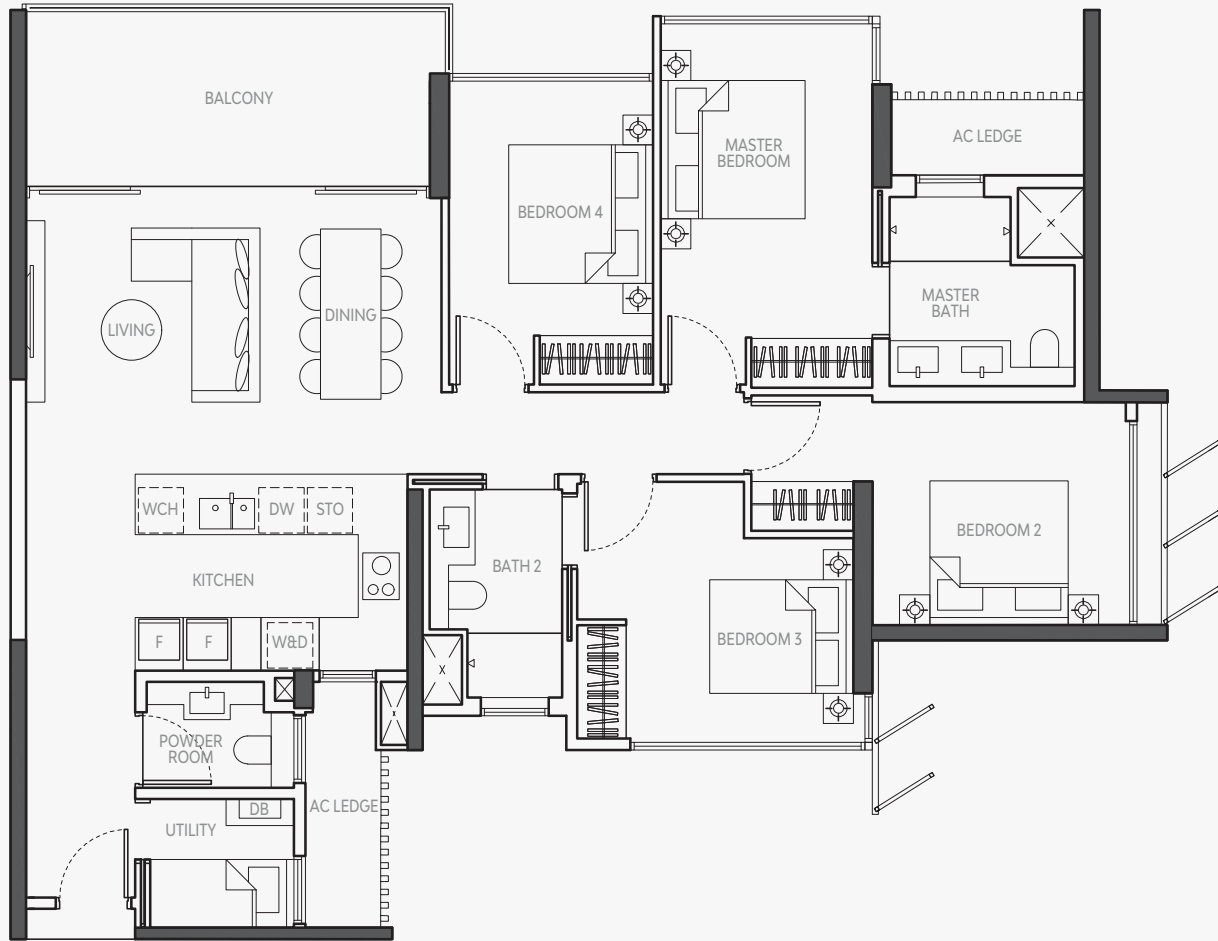
Area includes A/C ledge and balcony where applicable. The above plans and illustrations are subject to change as maybe required or approved by the relevant authorities. All floor areas are approximate only and subject to final survey. Please refer to key plan for orientation. The balcony shall not be enclosed unless with the approved balcony screen. For an illustration of the approved balcony screen, please refer to "Balcony Screen" page on this brochure.



# QUAD SUITE TYPE D2

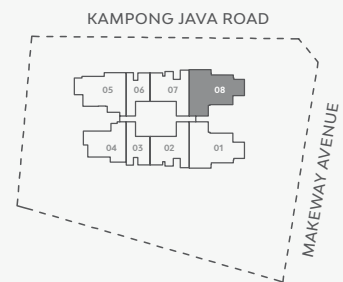
139 SQM / 1496 SQ FT

#19-08 - #22-08



SECURITY SCREENING EXTENT WHERE  
REQUIRED BY RELEVANT AUTHORITIES

- W&D: WASHER AND DRYER    DW: DISHWASHER    F: INTEGRATED FRIDGE    DB: DISTRIBUTION BOX
- WCH: WINE CHILLER    STO: STEAM OVEN    X: VOID SPACE



Area includes A/C ledge and balcony where applicable. The above plans and illustrations are subject to change as maybe required or approved by the relevant authorities.  
All floor areas are approximate only and subject to final survey. Please refer to key plan for orientation. The balcony shall not be enclosed unless with the approved balcony screen.  
For an illustration of the approved balcony screen, please refer to "Balcony Screen" page on this brochure.